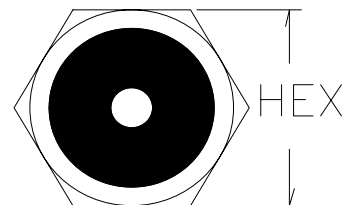
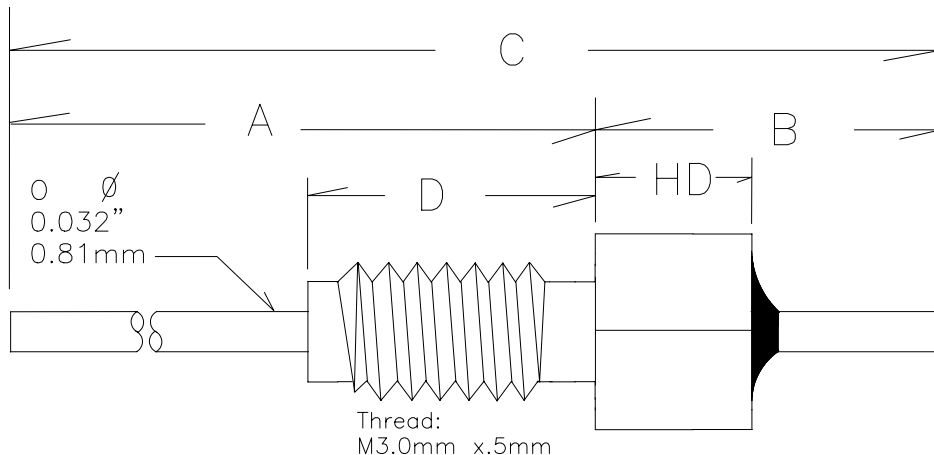
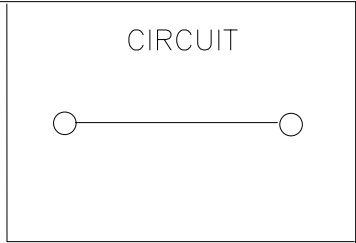


M3.0mm x .5mm THREADED  
 "0" CAPACITANCE FEED-THROUGHS



\*RoHS Compliant \* ISO 9001:2008 Registered\*

EMI P/N	FINISH	A		B		C		D		HD		HEX/R	
		Inches	mm	Inches	mm	Inches	mm	Inches	mm	Inches	mm	Inches	mm
M3C000D	Silver	.315"	8.00	.225"	5.71	.540"	13.71	.140"	3.55	.075"	1.90	.125"	3.17 Hex
M4C000D	Silver	.395"	10.03	.265"	6.73	.660"	16.76	.220"	5.59	.120"	3.05	.187"	4.75 Hex

MATERIAL AND FINISH:

CASE: C12L14 CRS  
 LEAD: Copper (1/2 Hard)  
 FINISH: Silver per QQ-S-365

WORKING VOLTAGE: 200VDC

WITHSTAND VOLTAGE:

250% of WVDC (5 seconds)

INSULATION RESISTANCE:

10 Gig-Ohm Minimum  
 @ 25 Degrees Celcius

RATED DC CURRENT: 10 A

DIMENSION TOLERANCE:

CASE LENGTH: +/- .010" (.250mm)  
 LEAD LENGTH: +/- .030" (.762mm)  
 LEAD DIAMETER: +/- .002" (.051mm)

OPERATING TEMP: -55° C to +125° C

INSTALLATION TEMP: N/A

MAXIMUM MOUNTING TORQUE: 2.0 in\*lbs

EMI FILTER COMPANY 12750 59th WAY NORTH CLEARWATER, FLORIDA 33760 (727) 585-7990 (727) 586-5138 Fax www.emifiltercompany.com		EMI PART NUMBER: M3.0 x .5mm SERIES FEED-THRU	
FSCM NO. OR9L0	DWG NO. M3FEEDTHRU <sub>s</sub> REVC	REV C	
SCALE: NTS			